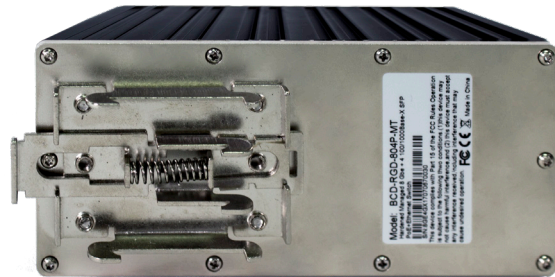


### Rigid Networking Series

The Rigid Networking Series provides an environmentally hardened networking solution to the video surveillance market. As a rugged switch, they can handle extreme temperature ranges from -40°F to 167°F (-40°C to 75°C). The fault-tolerant network protects the system from downtime resulting in loss prevention and stability. PoE offers centralized power management for each device. These network switches enable networks to be designed to meet the demands of the market. They are purpose built for mobile use and extreme temperature environments.



#### KEY FEATURES



**Port Density: 12 Ports**



**Environmentally Hardened**



**Fully Managed**



**40°F to 167°F (-40°C to 75°C)**



**5-Year Warranty**

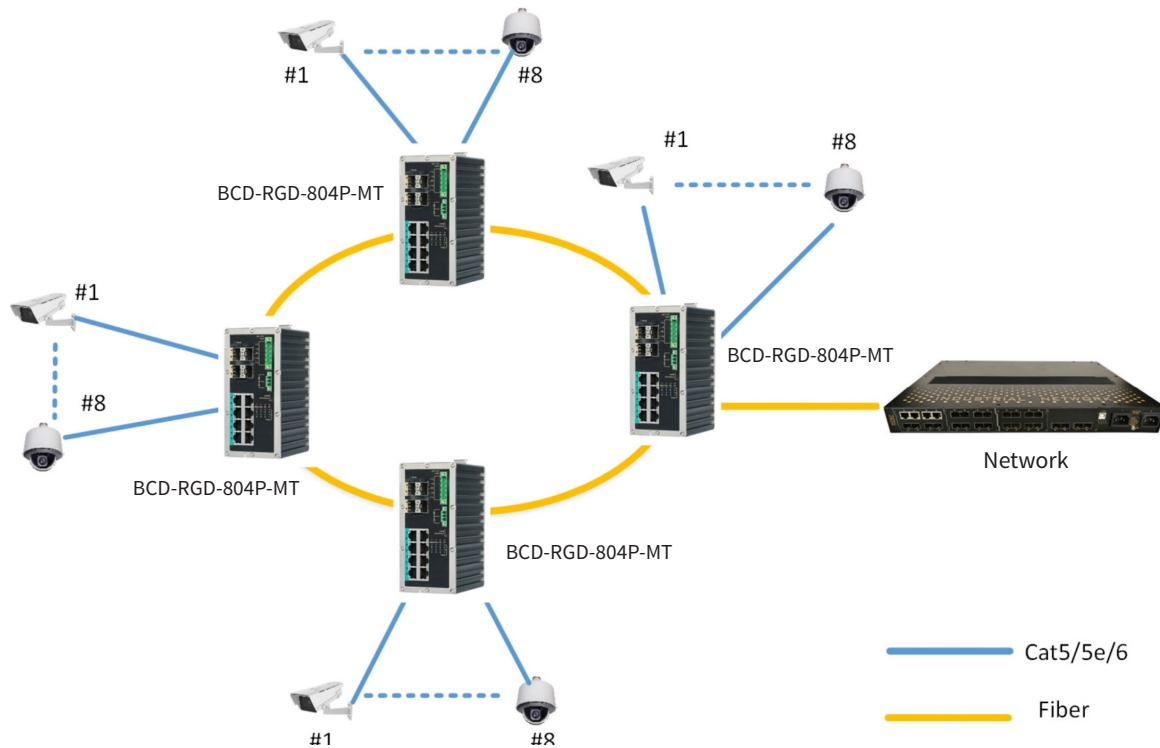
SYSTEM	
<b>RJ45 Ports</b>	(8) Gigabit Ports PoE+
<b>Optical Ports</b>	(4) SFP 1000Base-X
<b>Auto-Negotiation</b>	10/100/1000Mbps-Full/Half-duplex Auto MDI/MDI-X
<b>Multicast</b>	Supported
<b>IGMP</b>	V1/V2/V3 up to 256 groups
<b>Broadcast Storm Control</b>	Supported
<b>Power Failure Protection</b>	Relay Output
<b>Command Configurations</b>	Web GUI, Serial Console, CLIV
<b>Network Redundancy</b>	G.8032 ERPS, RSTP, MST
<b>Port Naming</b>	Capable
<b>Redundant Power</b>	Capable

ELECTRICAL/MECHANICAL					
<b>Redundant Power Input</b>	Terminals (6-Pin) Note: Power supply not included.				
<b>Power Input Overload</b>	Automatic Resettable				
<b>Overload Current Protection</b>	Yes				
<b>Reverse Polarity Protection</b>	Yes				
<b>Input Voltage Range</b>	48-55 VDC				
<b>Power Status</b>	Power 1, Power 2, Fault				
<b>Ethernet (per port)</b>	LINK/Activity				
<b>SFP</b>	LINK/Activity				
<b>PoE (Power Supply to PD)</b>	<b>Budget</b>	<b>Standard</b>	<b>Max Power (per port)</b>	<b>PSE Type</b>	<b>Power Pin Assignment</b>
	240W	IEEE802.3at	30W	End-Span	1/2 (+), 3/6 (-)
<b>Mounting Options</b>	DIN Rail or Wall-Mount				
<b>Enclosure</b>	IP40 Metal Case				
<b>Dimensions (WxDxH)</b>	2.68" (68mm) x 4.04" (102.5mm) x 5.75" (146mm)				
<b>Max Weight</b>	1.98 lbs. (.9kg)				
ETHERNET					
<b>Standards</b>	IEEE802.3 10Base-T IEEE802.3u 100Base-TX IEEE802.3ab 1000Base-T IEEE802.3u 100Base-FX IEEE802.3z 1000Base-X IEEE802.3af/at Power over Ethernet IEEE 802.1d STP (Spanning Tree Protocol) IEEE 802.1w RSTP (Rapid Spanning Tree Protocol) IEEE 802.1s MSTP (Multiple Spanning Tree Protocol) ITU-T G.8032 / Y.1344 ERPS (Ethernet Ring Protection Switch) IEEE 802.1Q Virtual Local Area Network (VLAN) IEEE 802.1ad Stacked VLAN, Q-in-Q IEEE 802.1p QoS/CoS Protocol for Traffic Prioritization IEEE 802.1X Network Authentication IEEE 802.3x flow control, back pressure flow control				
<b>Processing Type</b>	Store-and-Forward				
<b>Switch Performance</b>	24 Gbps				
<b>Forward Filter Rate</b>	1.488 Mpps (max)				
<b>Frame Buffer Memory</b>	4 Mbit				
<b>Packet Buffer Memory</b>	4 MBit				
<b>Max. Packet Length</b>	9.6 Kilobytes Jumbo Frame				
<b>Address Table Size</b>	8K MAC addresses				
ENVIRONMENTAL					
<b>Operating Temperature</b>	-40°F to 167°F (-40°C to 75°C)				
<b>Storage Temperature</b>	-40°F to 185°F (-40°C to 85°C)				
<b>Operating Humidity</b>	5 ~ 90% (non-condensing)				
<b>MTBF</b>	+200,000 hours				
REGULATORY APPROVALS					
ISO9001, CE, FCC, RoHS EMI FCC Part 15 Subpart B Class A EN55022:2010+AC: 2011, Class A EMS IEC 61000-4-2: 2008 (ESD) IEC 61000-4-3: 2010 (RS) IEC 61000-4-4: 2012 (EFT) IEC 61000-4-5: 2014 (Surge) IEC 61000-4-6: 2013 (CS) IEC 61000-4-8: 2009 (PFMF) Free Fall IEC60068-2-32 Shock IEC60068-2-27 Vibration IEC60068-2-6					

SOFTWARE	
<b>Network Redundancy</b>	STP/RSTP/MSTP, Port Trunk with LACP, ERPS (<50ms)
<b>Configuration</b>	Web-base, Telnet, Console, Cisco-like CLI, TFTP, SSH, SSL, SNMP v1/v2c/v3, RMON, USB
<b>Security Features</b>	MAC based port security, static MAC address Access Control List(ACL), 802.1X authentication, RADIUS SNMP v3 encrypted authentication and access
<b>Software Features</b>	Qos-Cos, ToS/Diffserv mapping, SPQ/WRR queuing 802.1Q VLAN and 802.1ad Q-in-Q provider bridge IGMP/MLD Snooping, IGMP/MLD query DHCP Client/Server/Relay with Option 82 Internet Protocol Version 6 (IPv6) Port Status, Statistics, Monitoring, Security, and Rate Limiting, SFP DDM PoE Status, Monitoring, Ping Alarm, Scheduling Port Mirror, uPnP, Modbus/TCP



### Typical System Configuration



### Rigid Networking Series

The BCD-RGD-402P-UMT is a high performance six port, industrial managed gigabit Ethernet switch with four 10/100/1000M PoE ports and two gigabit SFP ports. The four PoE ports support IEEE802.3af/at standard. The switch supports Ethernet Ring Protection Switching (ERPS) as well as STP/RSTP/MSTP. It also supports Web-based network management, VLAN, QoS, SNMP, IGMP snooping and other network functions. Rugged design with IP40 enclosure and industrial level 3 ESD protection makes it suitable for IP surveillance and industrial networks. The series is available in either DIN rail or wall-mount configurations.

#### KEY FEATURES



**Port Density: 6 Ports**



**Environmentally Hardened**



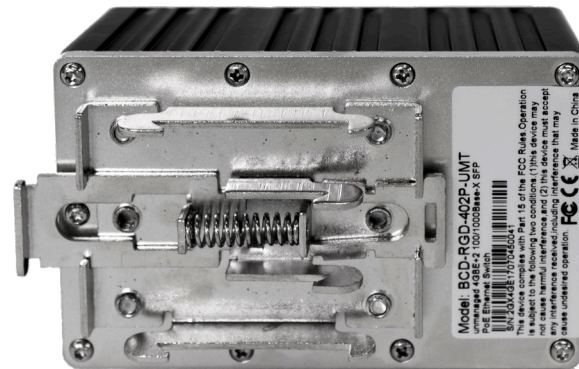
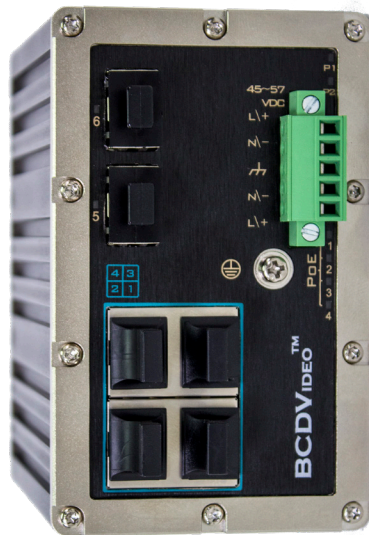
**UnManaged**



**40°F to 167°F (-40°C to 75°C)**

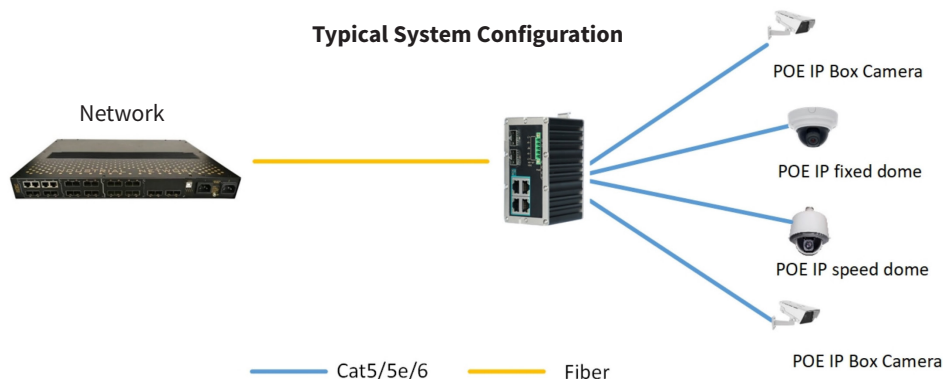


**5-Year Warranty**



SYSTEM	
<b>RJ45 Ports</b>	(4) 10/100/1000MBase-T
<b>Optical Ports</b>	(2) 1000MBase-X SFP
<b>Auto-Negotiation</b>	10/100/1000Mbps-Full/Half-duplex Auto MDI/MDI-X
<b>Multicast</b>	Supported
<b>Broadcast Storm Control</b>	Supported
<b>Port Naming</b>	Capable
<b>Redundant Power</b>	Capable

ELECTRICAL/MECHANICAL					
<b>Redundant Power Input</b>	2 x 48 ~ 57VDC (Terminal Block) Note: Power supply not included.				
<b>Power Input Overload</b>	Automatic Resettable				
<b>Overload Current Protection</b>	Yes				
<b>Reverse Polarity Protection</b>	Yes				
<b>Input Voltage Range</b>	48-55 VDC				
<b>Power Status</b>	Power 1, Power 2				
<b>Ethernet (per port)</b>	LINK/Activity				
<b>SFP</b>	LINK/Activity				
<b>PoE (Power Supply to PD)</b>	<b>Budget</b>	<b>Standard</b>	<b>Max Power (per port)</b>	<b>PSE Type</b>	<b>Power Pin Assignment</b>
	120W	802.3 af/at	30W	End-Span	1/2(+), 3/6(-)
<b>Mounting Options</b>	DIN Rail or Wall-Mount				
<b>Enclosure</b>	IP40 Metal Case				
<b>Dimensions (WxDxH)</b>	2.44" (62mm) x 3.41" (86.5mm) x 3.94" (100mm)				
<b>Max Weight</b>	1.32 lbs. (.6kg)				
ETHERNET					
<b>Standards</b>	IEEE2.3, IEEE802.3u, IEEE802.3z, IEEE802.3ab				
<b>Processing Type</b>	Store-and-Forward				
<b>Switch Performance</b>	12Gbps				
<b>Forward Filter Rate</b>	1.488 Mpps (max)				
<b>Frame Buffer Memory</b>	1 Mbit				
<b>Packet Buffery Memory</b>	1 Mbit				
<b>Max. Packet Length</b>	9.6 Kilobytes Jumbo Frame				
<b>Address Table Size</b>	1024K MAC addresses				
ENVIRONMENTAL					
<b>Operating Temperature</b>	-40°F to 167°F (-40°C to 75°C)				
<b>Storage Temperature</b>	-40°F to 185°F (-40°C to 85°C)				
<b>Operating Humidity</b>	5 ~ 90% (non-condensing)				
REGULATORY APPROVALS					
ISO9001, CE, FCC, RoHSEMI EN55022:2010+AC:2011, ClassA EN61000-3-2:2006+A1:2009+A2:2009 EN61000-3-3:2013 EN55024:2010					



**FOR MORE INFORMATION:** [bcdvideo.com](http://bcdvideo.com) | [sales@bcdvideo.com](mailto:sales@bcdvideo.com) | +1.847.205.1922 **TECH SUPPORT:** [support@bcdvideo.com](mailto:support@bcdvideo.com) | +1.844.462.2384

Copyright © 2018, BCDVideo. All rights reserved. This document is provided for information purposes only. The contents are subject to change without notice.